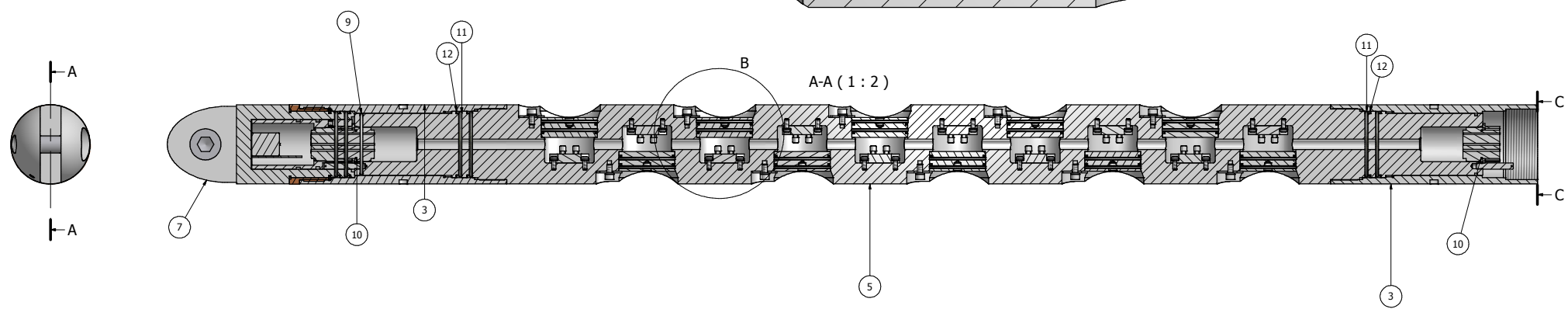
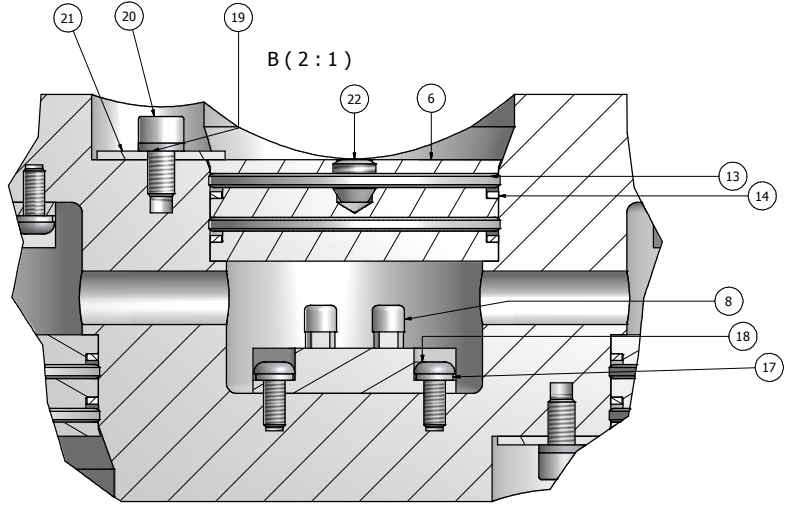
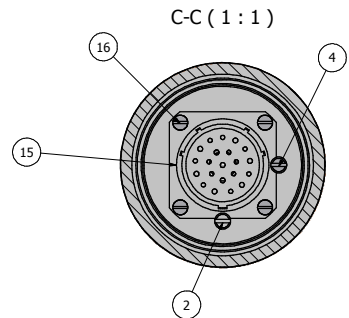
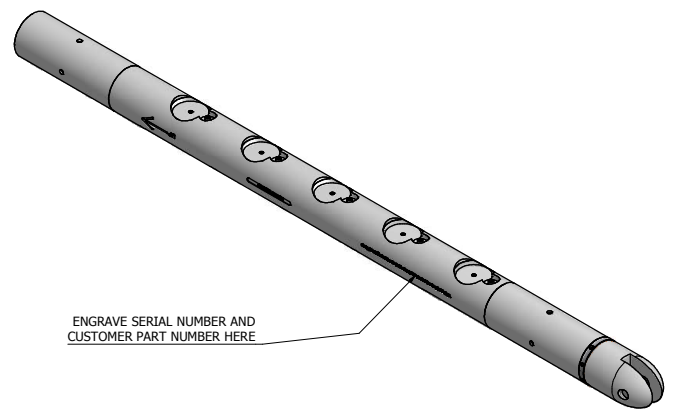


PARTS LIST			
ITEM	QTY	PART NUMBER	DESCRIPTION
1	1	ASR-158	MOTION SENSOR GA
2	2	ASR-24	M6 LONG DOWEL
3	2	ASR-65	COUPLER BARREL
4	1	ASR-82	M6 SHORT DOWEL
5	1	ASR-HP126	VRS HP BARREL
6	10	ASR-HP127	VRS HP PLUG
7	1	ASR-HP89	NOSE CONE Mk2 GA
8	10	ASSY-VRS-REGULATOR	VRS Mosfet Regulator Assembly
9	1	AV007	O-Ring BS4518-0546-24. Use default compound unless otherwise specified. Refer to standard list for details.
10	2	AV009	O-RING BS4518-0251-16; Use default compound unless specified. See standard sheet for information.
11	4	AV017	O-Ring BS4518-0580-30. Use default compound unless specified. Refer to standard list for details.
12	4	AV017 BU	58x3 Back-Up. Use default compound unless specified. Refer to standard list for details.
13	20	AV020	O-Ring BS1806-135. Use default compound unless specified. Refer to standard list for details.
14	20	AV020BU	Back-Up BS1806-135. Use default compound unless specified. Refer to standard list for details.
15	2	C001	6020-22-21SN MODIFIED MIL CONNECTOR
16	8	M3 x 6 Slotted Cnsk Head	DIN963 ISO2009 M3 x 6 Slotted Cnsk Head Screw, Stainless
17	20	M4 Spring Washer Form A	M4 Stainless Steel Spring Washer Form A
18	20	M4 x 10 Button Head	ISO7380 M4 x 10 Hexagon Socket Button Head Screw, Stainless
19	10	M5 Spring Washer Form A	M5 Stainless Steel Spring Washer Form A
20	10	M5 x 10 Cap Head	DIN 912 M5 x 10 Hexagon Socket Head Cap Screw, Stainless Steel
21	10	M5x24 washer	ST. STEEL PENNY WASHER
22	10	M8 x 8 Set Screw, Cup	DIN916 M8 x 8 Hexagon Socket Set Screw, Cup Point, Stainless



ISSUE RECORD	
ISSUE	CHANGE
02	Template changed and updated from 01.3 v12 to current. Model re-built due to Vault. LT20100204

AUTHOR	CHECKER	APPROVER
L. Tattersall	J. Moody	G. Tubridy
DATE	03/02/2010	05/02/2010

NOTES:
 ALL DESIGNS, DRAWINGS AND IMAGES SHOWN ARE THE PROTECTED COPYRIGHT AND INTELLECTUAL PROPERTY OF AVALON SCIENCES LTD, AVALON HOUSE, BANCOMBE ROAD, SOMERTON, TA11 6SB
 All dimensions in standard SI units unless specified, (mm/deg)
 All burrs and sharp edges should be removed
 Drawings in 3rd angle projection

TOLERANCES
 All tolerances unless specified are:
 0 ± 0.2
 0.0 ± 0.1
 0.00 ± 0.05
 0.000 ± 0.01
 Angles ± 15°
 Surface Finish
 1.8µm unless specified

MATERIAL	PART NAME
	VRS HP G.A
CONDITION	PART NUMBER
	ASR-HP128
FINISH	ISSUE
	02